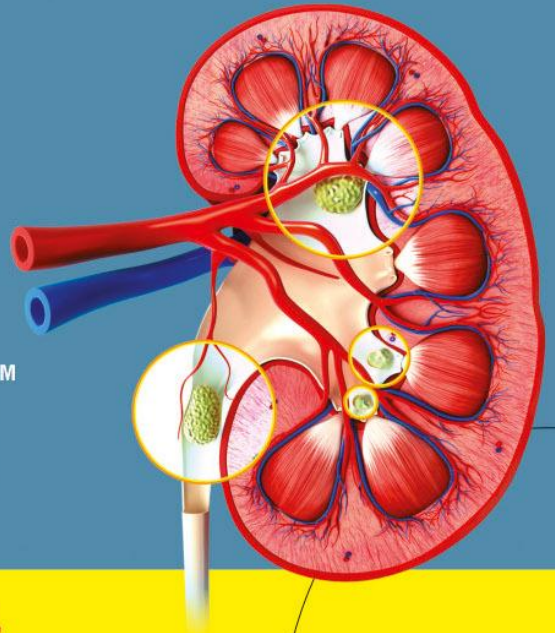




Urimass™

Combi KIT



EFFECTIVE CURE OF KIDNEY STONE
Potent Litholytic & Stone Flusher

Renal Calculi

Colic Pain, Hematuria, Oligouria, Hydronephrosis -

By virtue of its phytoconstituents it acts as stone inhibitor. By modulating the tone of urinary system it flushes calculi of moderate size. It fragments renal calculi & ensure its excretion.

- **Double Strength at Same Time**
- **Reduces Recurrent Pain Episodes**
- **Reduces Cost of Treatment**

Dosage : Syrup

Children : 5 to 7.5 ml. twice a day
with water

Adults : 10 to 15 ml. twice a day
with water

Dosage : Capsules

1-1 Capsules Morning & Evening
after meals.

Stone inhibitor
Stone Flusher
Stone Smasher

Combi KIT
• 2 x 150 ml Syrup
• 3 x 10 Capsules
In Same Pack



NaturesTask
BETTER LIVING